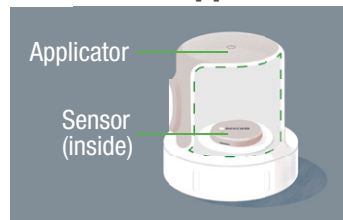


START HERE

1 G7 BASICS

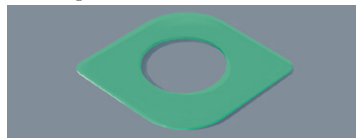
G7 shows your glucose information on your display devices.

Sensor and applicator



- During setup, we'll show you how to use the applicator to insert the built-in sensor under your skin
- The sensor sends a glucose reading to your display device(s) every 5 minutes
- The sensor lasts up to 10 days with a 12-hour grace period

Overpatch



After you insert the sensor, you must apply the overpatch to keep the sensor on your body.

Instructions

During setup, use the sensor insertion instructions found in the app or use *Inserting Sensor* below.

Use up to 3 display devices

Get your glucose information on your phone, Apple Watch, and the Dexcom receiver. You can set up the app, the receiver, or both, in either order. For supported smartphones and operating systems go to: dexcom.com/compatibility

2 SETTING UP APP

Must have secure internet access during setup.

(To set up receiver, see product instructions in receiver box.)

1. Get started

- Scan the QR code or go to the App Store or Google Play to download the Dexcom G7 app



- Open the app
- Login or create an account



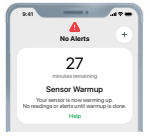
2. Set up

- Follow app instructions to set up app
- For instructions on inserting the sensor, follow app instructions or use *Inserting Sensor* below

- After inserting and pairing, follow local guidelines for throwing out the applicator and recycling the Dexcom packaging.

3. Sensor warmup

Sensor warmup timer tells you when you'll start getting readings and alerts.



4. Sensor session

Go to the *G7 User Guide* to find out more.

Review Safety Information in the *G7 User Guide*.

All graphics are representational. Your product may look different.

INSERTING SENSOR

1. Choose sensor site by age

IMPORTANT! If you wore G6 sensors on your abdomen, wear G7 sensors on the back of your upper arm. Children ages 2-6 years can also use their upper buttocks.

a. Age 7 years and older:

Use back of upper arm

b. Age 2 years (24 months) – 6 years:

Use back of upper arm or upper buttocks

Avoid areas:

- With loose skin or without enough fat to avoid muscles and bones
- That get bumped, pushed, or you lie on while sleeping
- Within 3 inches of infusion or injection site
- Near waistband or with irritations, scarring, tattoos, or lots of hair

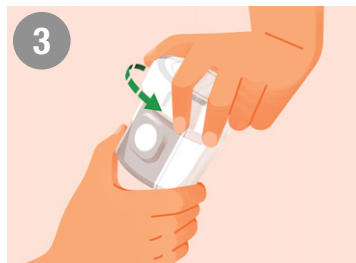
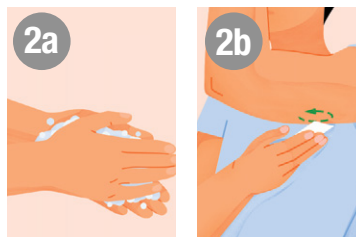
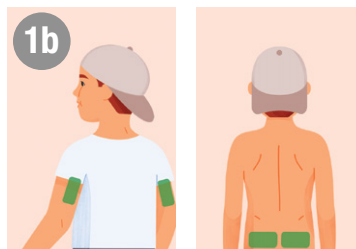
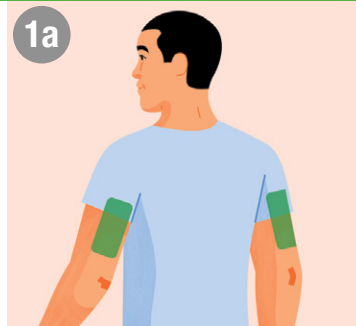
To keep sensor attached see dexcom.com/faqs

2. Clean and dry site so sensor stays on

- Wash hands with soap and water. Dry.
- Rub site with an alcohol wipe to get rid of all oils.
- Let dry completely so sensor will stick.

3. Unscrew cap

- Don't touch inside applicator
- Don't use if damaged or previously opened



4. Use applicator to insert sensor

- Relax any muscles near site.
- Press and hold applicator firmly against skin until clear safety guard is pushed in. Then push button on side of applicator.

5. Remove applicator

- Save applicator because you'll need its pairing code
- Screw cap back on applicator

6. Rub and press

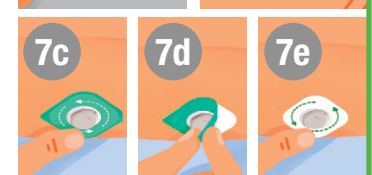
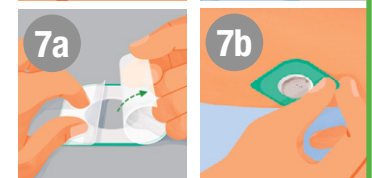
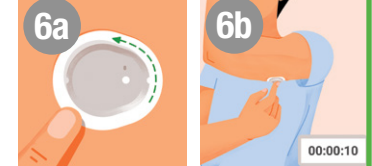
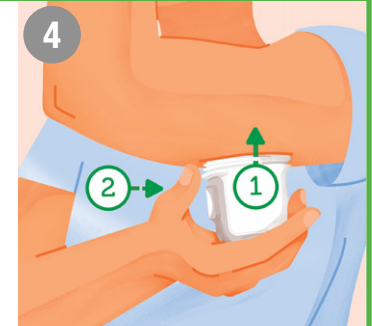
To help keep the patch on your skin:

- Rub firmly around patch 3 times
- Gently press on top of sensor for 10 seconds

7. Apply overpatch

You must apply the overpatch to keep the sensor on your body. It's bundled with the instructions in the sensor box.

- Carefully pull off both clear liners, one at a time. Don't touch white adhesive area.
- Use colored tab to place overpatch around sensor.
- Rub around overpatch.
- Use tab to peel off colored liner.
- Rub around overpatch.
- Go back to the app or receiver to finish setup.



ADHESIVE PATCH CARE

The longer you keep the patch dry and sweat-free in the first 12 hours, the longer it may stick to your skin. When it gets wet, gently pat it dry as soon as you can. If it peels off your skin, trim the peeled parts and put on medical tape.

REMOVING SENSOR

After sensor session ends, peel off patch like a bandage. To make it easier, try these tips:

- Loosen edge and soak patch in body oil, like baby oil or an adhesive remover for skin (see product instructions before using)
- Use adhesive removal wipes for

skin to rub the skin that gets exposed as you peel back the patch

- Try different pulling techniques:
 - Pull off the patch slowly, folding it over itself, in the same direction of hair growth
 - Stretch loosened edge, and push your fingers under the patch to pull it off skin



Dexcom, Inc.
6340 Sequence Drive
San Diego, CA 92121 USA
1-888-738-3646
dexcom.com

AW-00080-902 Rev 002 MT-00080-902
Rev Date: 04/2023