

## Training Checklist

For detailed, step-by-step instructions on how to use the Dexcom G6 Continuous Glucose Monitoring System, refer to the user guide at [dexcom.com/guides](https://dexcom.com/guides).

Use this checklist, along with the Start Here and Using Your G6 guides, as you train on the Dexcom G6<sup>®</sup> Continuous Glucose Monitoring (CGM) System.

### Introduce CGM and Components



Review G6 Overview and What it Does in Start Here Guide

### Set Up Display Device



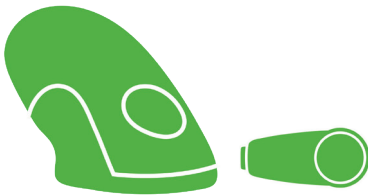
**Receiver:** To turn on the receiver, press and hold the button for 2 seconds.

**Dexcom G6 App\*:** Download and open

1. Follow onscreen instructions to enter:
  - Low and High Alerts
  - Sensor Code - **to avoid daily calibrations**
  - Transmitter SN

\*For a list of compatible devices see: [dexcom.com/compatibility](https://dexcom.com/compatibility)

### Insert Sensor and Attach Transmitter



- Choose sensor site
- Insert sensor with applicator
- Snap in transmitter

### Pair Transmitter and Start Sensor



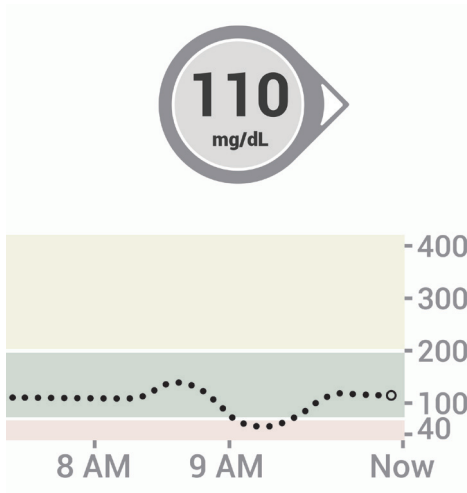
Pair



2-hour warmup

1. Wait for transmitter to pair
2. Tap **Start Sensor**
  - No readings during 2-hour warmup
  - Keep display device within 20 feet during warmup

## □ Home Screen Overview



Review Home Screen Overview in Using Your G6 with patient.

Home screen shows

- Sensor Glucose Reading
- Trend Arrow
- Trend Graph
- High and Low Alert Levels

## □ Treatment Decisions

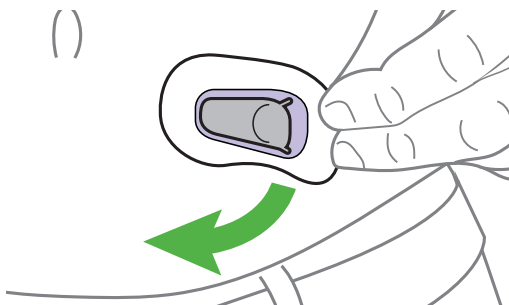


Review Treatment Decisions in Using Your G6 with patient.

Use your meter if

- Your G6 readings don't match your symptoms
- Your G6 doesn't show both a number and arrow

## □ Ending Sensor Session



Review Ending Your Sensor Session in Using Your G6 with patient.

- Remove sensor and transmitter together from body
- Remove transmitter from holder
- **KEEP TRANSMITTER.**

## □ Dexcom Support Teams



Review Dexcom Support Teams in Using Your G6 with patient.

For detailed, step-by-step instructions on how to use the Dexcom G6 Continuous Glucose Monitoring System, please refer to your user guide.

Failure to use the Dexcom G6 Continuous Glucose Monitoring System (G6) and its components according to the instructions for use provided with your device and available at <https://www.dexcom.com/safety-information> and to properly consider all indications, contraindications, warnings, precautions, and cautions in those instructions for use may result in you missing a severe hypoglycemia (low blood glucose) or hyperglycemia (high blood glucose) occurrence and/or making a treatment decision that may result in injury. If your glucose alerts and readings from the G6 do not match symptoms, use a blood glucose meter to make diabetes treatment decisions. Seek medical advice and attention when appropriate, including for any medical emergency.

Dexcom, Inc. | 6340 Sequence Drive | San Diego, CA 92121 | Technical Support: 1-844-607-8398 | [www.dexcom.com](http://www.dexcom.com)